

# LAZER

H I G H P E R F O R M A N C E L I G H T I N G



## **FORD RANGER**

### **ROOF RAIL MOUNTING KIT**

#### **FOR LINEAR-36**

---

**FITTING INSTRUCTIONS**

**ANLEITUNG**

**INSTRUCTIONS**

**INSTRUCCIONES**

## WHAT'S INCLUDED

- 2x STAINLESS STEEL MOUNTING BRACKET (LH/RH)
- 1x ANTI-THEFT FASTENER SET (VARIOUS SIZES)
- 1x CARBON SPACER SET (VARIOUS SIZES)
- 4x M6 FASTENERS plus WASHERS
- 2x CABLE GROMMETS
- 1x VHB CLEANING SACHET
- 4x BUTT CONNECTORS

## DIFFICULTY LEVEL



## TOOLS REQUIRED

TORX ALLEN KEY FLAT PHILIPS



T-20



5



DRILL BIT  
20MM / 9MM



SPANNER  
10MM



WIRE STRIPPERS  
AND RATCHET CRIMPERS



WIRE CUTTERS



SOCKET WRENCH

## **STEP 1: HEADLINING REMOVAL**

1. Remove the grab handles, Sunvisors and brackets



2. Remove interior lights and 'A' Pillar trims.





3. Remove the 'B' and 'C' pillar trims (the top of the seatbelt will need to be removed for this).



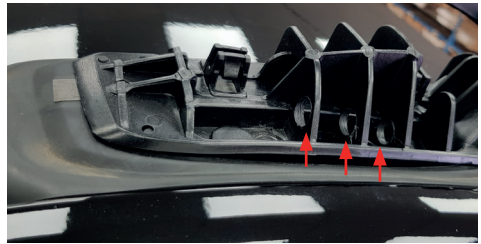
4. Pull down the door rubber seals and the roof lining will now be free to drop down.





## STEP 2: FITTING THE BRACKETS

1. After removing both roof rails; disassemble the front of the **left** roof rail.
2. Drill three 9mm holes through in inside of the roof rail to route the cable as indicated below. Then slide the roof rail bracket inside the rail (drilling should be done with the roof rail off the vehicle).
3. Locate a suitable location on the roof rail bracket where you can drill a 9mm hole through the bracket and the roof, then insert grommet. (check the underside of the roof to ensure the area is clear - e.g Airbag systems)



4. Reassemble the roof rails (leaving the front cover off the left roof rail) and use included washers and bolts to mount the brackets on both rails, these will replace the standard Torx bolts.
5. Re-install roof rails and mount the light bar using the supplied spacers, washers and 70mm bolts.

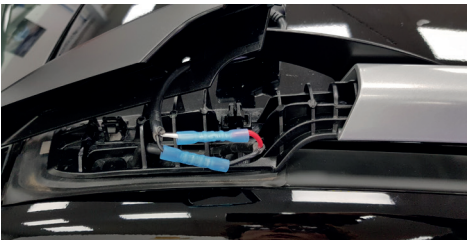


### STEP 3: WIRING

1. Locate a suitable place on the roof rail cover to drill a 9mm hole for the lamp cable to pass through.
2. Remove connector from lamp cable and feed through the 9mm hole in the roof rail cover, using supplied cable grommet and apply sealant (VHB wipes included to wipe and prepare surface before applying sealant).



3. Using either our Extension kit (the connectors will need to be removed) or your own wiring extension. Route the extension cables up through the grommet and hole in the roof of the vehicle and then through the 3x pre-drilled holes in the roof rail.
4. Connect the lamp cable and extension cable using the supplied heatshrink splices within the roof rail space.



5. Using either our wiring kit or your own wiring; Install the relay and connect the live and earth to the battery, the high beam trigger is taken from the back of the headlight.



For vehicles that do not produce a constant 12v signal from the back of the headlight will require a CanM8 High Beam interface to control the signals. Please see our youtube channel, or scan the QR code for more information regarding install of the CanM8 interface.



6. Route the wiring kit cables through the factory grommet, make sure a drip loop is made with the cable to prevent water ingress. The cable will fall into the left footwell.



7. Route the wiring harness cables up the 'A' pillar and the extension cables down the 'A' pillar and connect the two cables together within the 'A' pillar using the 2x included heatshrink splices.



## **STEP 4: TEST LIGHT BAR IS WORKING CORRECTLY BEFORE YOU RE-ASSEMBLE VEHICLE**





**Thank you for choosing a Lazer Lamps product.**

**Vielen Dank dafür, dass Sie sich für ein Produkt von Lazer Lamps entschieden haben.**

**Merci pour choisir un produit de Lazer Lamps.**

**Gracias por la seleccion de productos de Lazer Lamps.**

**LAZER**  
HIGH PERFORMANCE LIGHTING

**T: +44 (0)1992 677374**

**E: SALES@LAZERLAMPS.COM**

**W: WWW.LAZERLAMPS.COM**

Lazer Lamps Ltd, Units 1&2 Harlow Mill Business Centre, Riverway, Harlow,  
Essex. CM20 2FD. United Kingdom

